

ERNEUERUNG DER AUFSTIEGSANLAGEN "KRONPLATZ 1+2" MIT NEUER PISTENANBINDUNG AM KRONPLATZ IN DER GEMEINDE BRUNECK

RINNOVO DEGLI IMPIANTI DI RISALITA "PLAN DE CORONES 1+2" CON NUOVO COLLEGAMENTO ALLE PISTE SUL PLAN DE CORONES NEL COMUNE DI BRUNICO

INHALT / CONTENUTO

FOTODOKUMENTATION

Nov 2023	DB	MP
Datum data	bearb. elab.	gepr. esam.
Anlage	Allegato	

05

AUFTRAGGEBER / COMMITTENTE

KRONPLATZ SEILBAHN GMBH
Reischach, Seilbahnstraße 10
39031 Bruneck

PROJEKTANT / PROGETTISTA

iPM Engineering
Dott. Ing. Markus Pescollderungg
Dott. Ing. Udo Mall
I-39031 Bruneck, Gilmplatz 2 / Brunico, piazza gilm 2
Tel.: 0474/050005 - E-Mail: info@ipm.bz - Web: www.ipm.bz



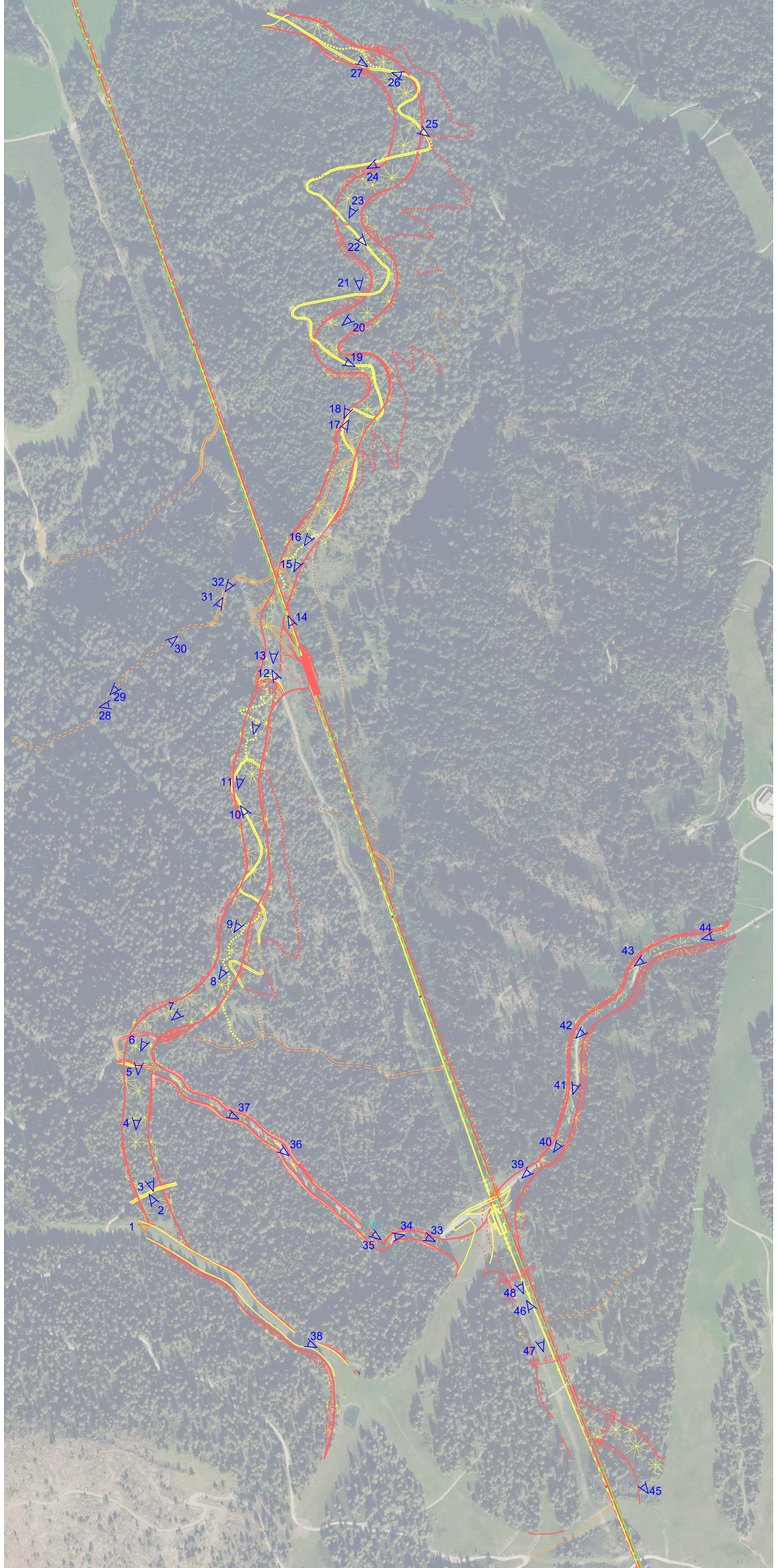
ARBEITSGRUPPE / GRUPPO DI LAVORO

Jesacher
Geologiebüro - Studio di geologia
I-39031 Bruneck/Brunico, Via Carl-Toldt-Straße 11
t. 0474/409376 info@jesacher.bz

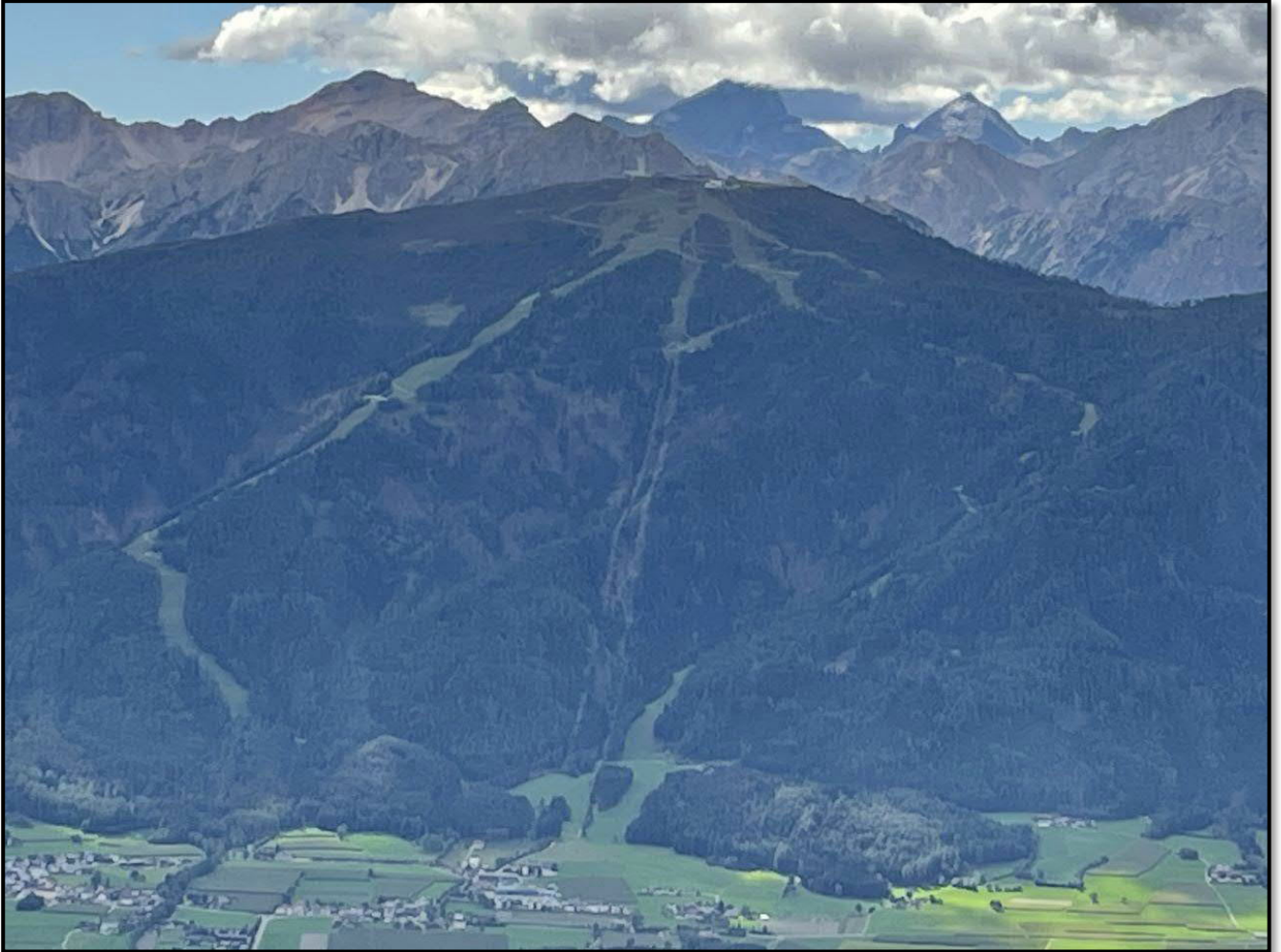
jesacher
geologiebüro | studio di geologia

TRIFOLIUM
Dr. Kurt Kußstatscher
I-39050 Jenesiën - Afingerweg 40
Tel. 3355346470 www.trifolium.net

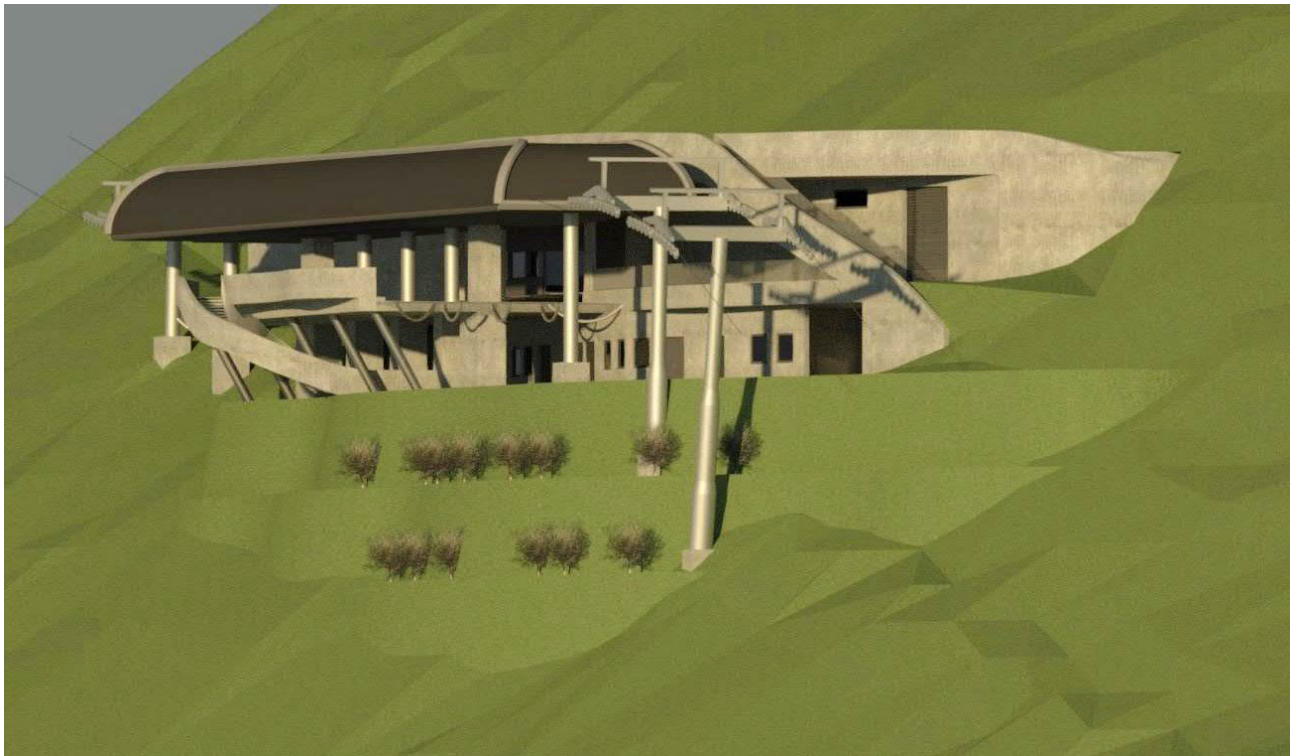
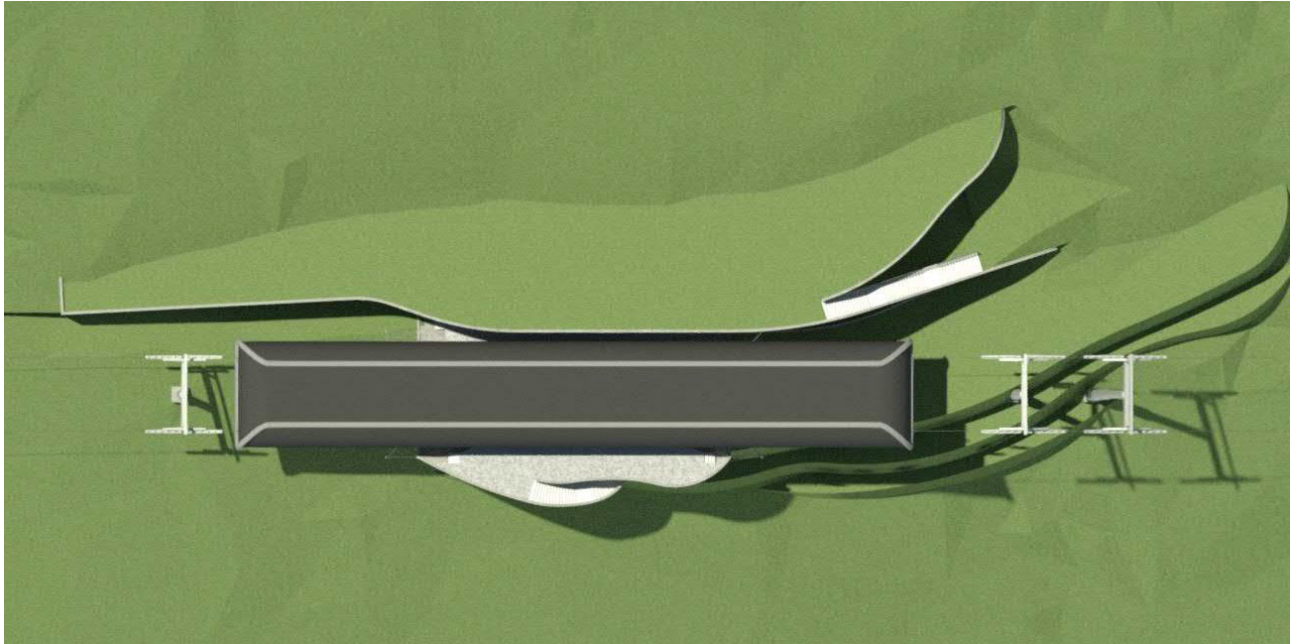


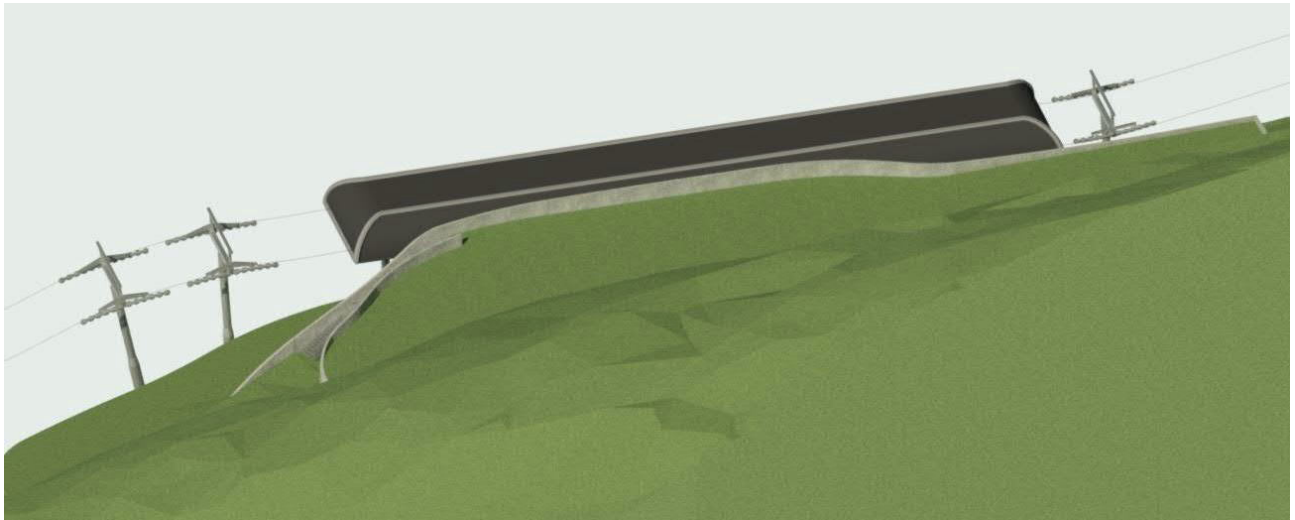


PANORAMAFOTO



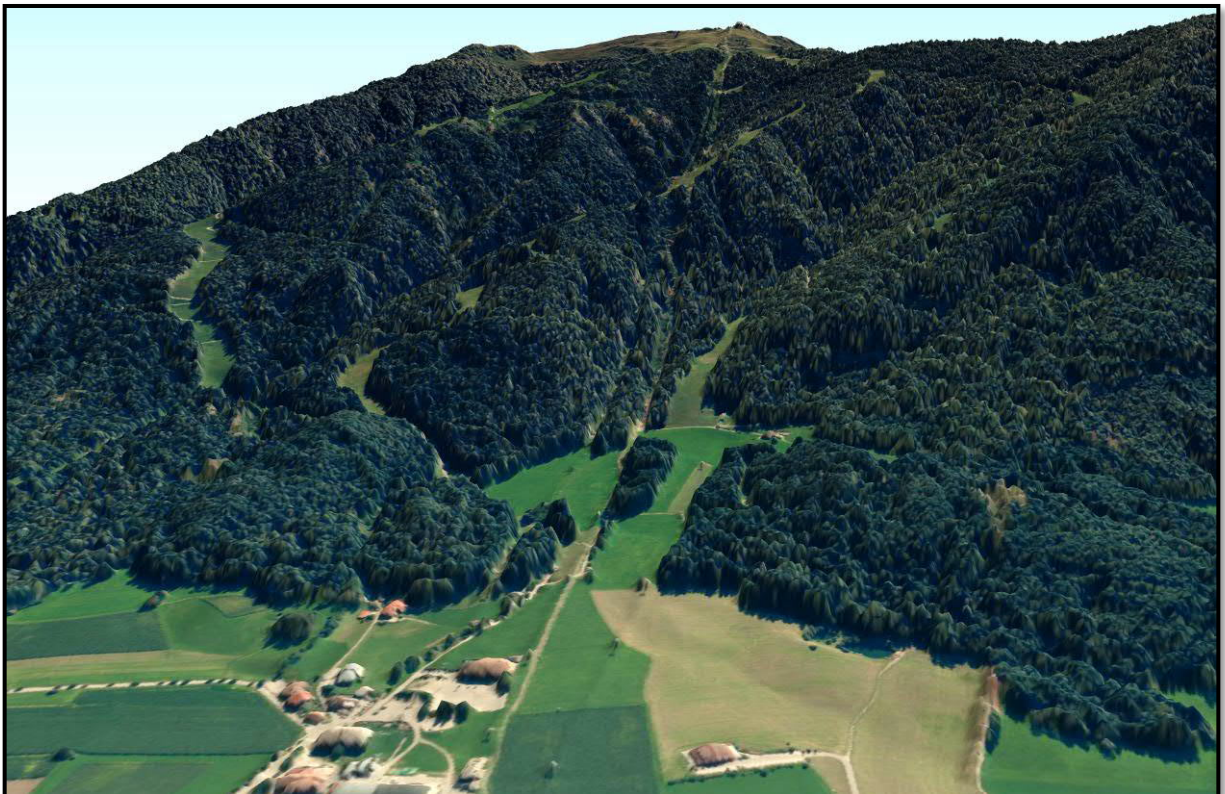
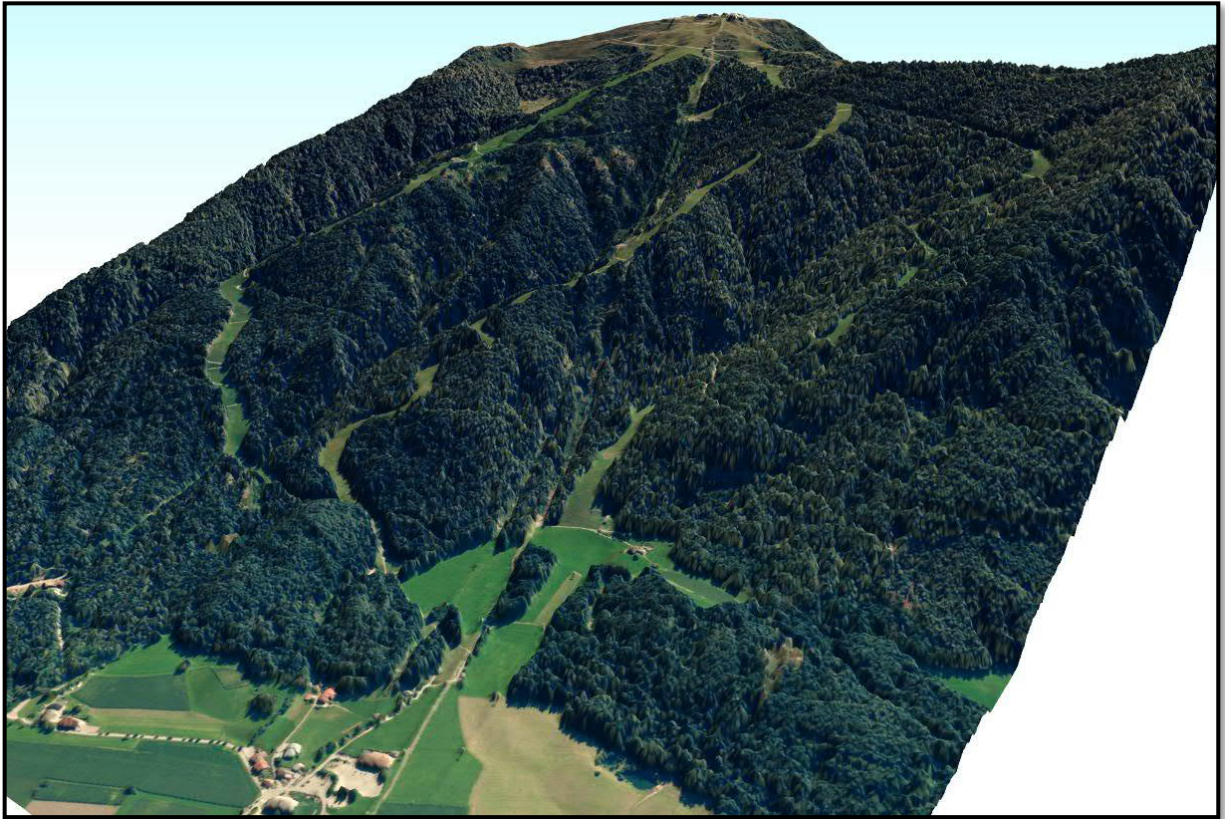
RENDERING MITTELSTATION





RENDERING SKIPISTE „K1+2“





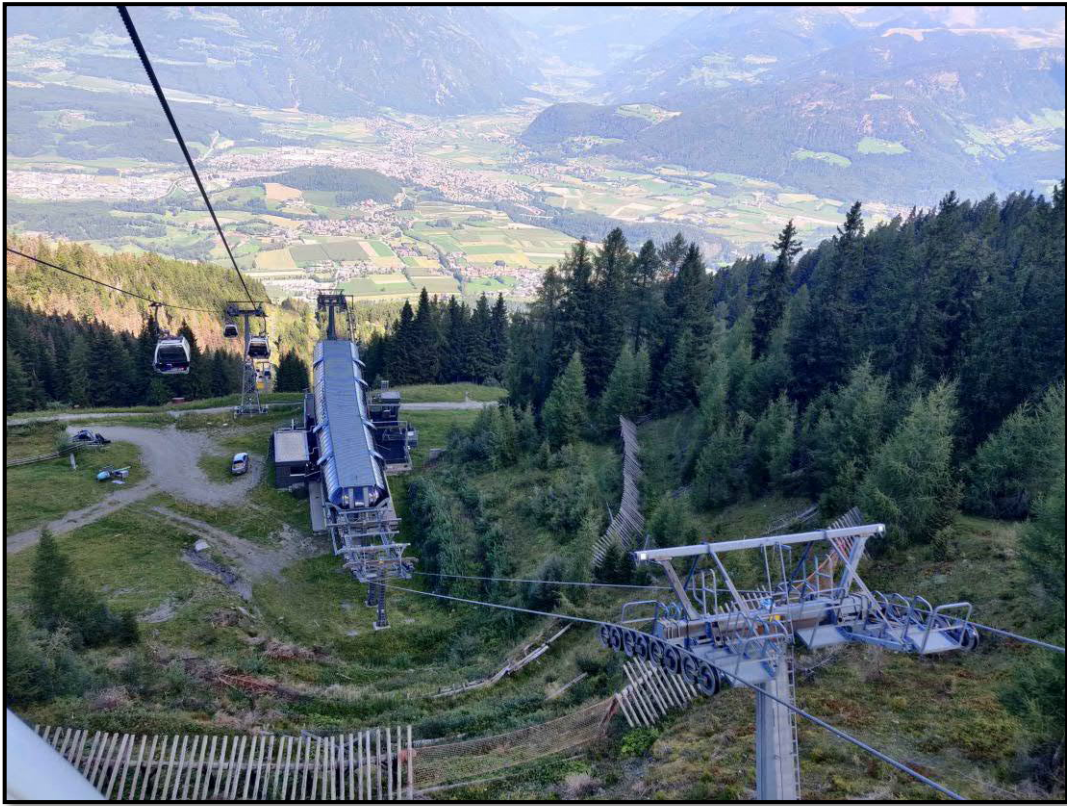
TALSTATION







BESTEHENDE MITTELSTATION





NEUE MITTELSTATION



BERGSTATION









SKIPISTE „K1+2“



Foto 1



Foto 2



Foto 3



Foto 4



Foto 5



Foto 6



Foto 7



Foto 8



Foto 9



Foto 10

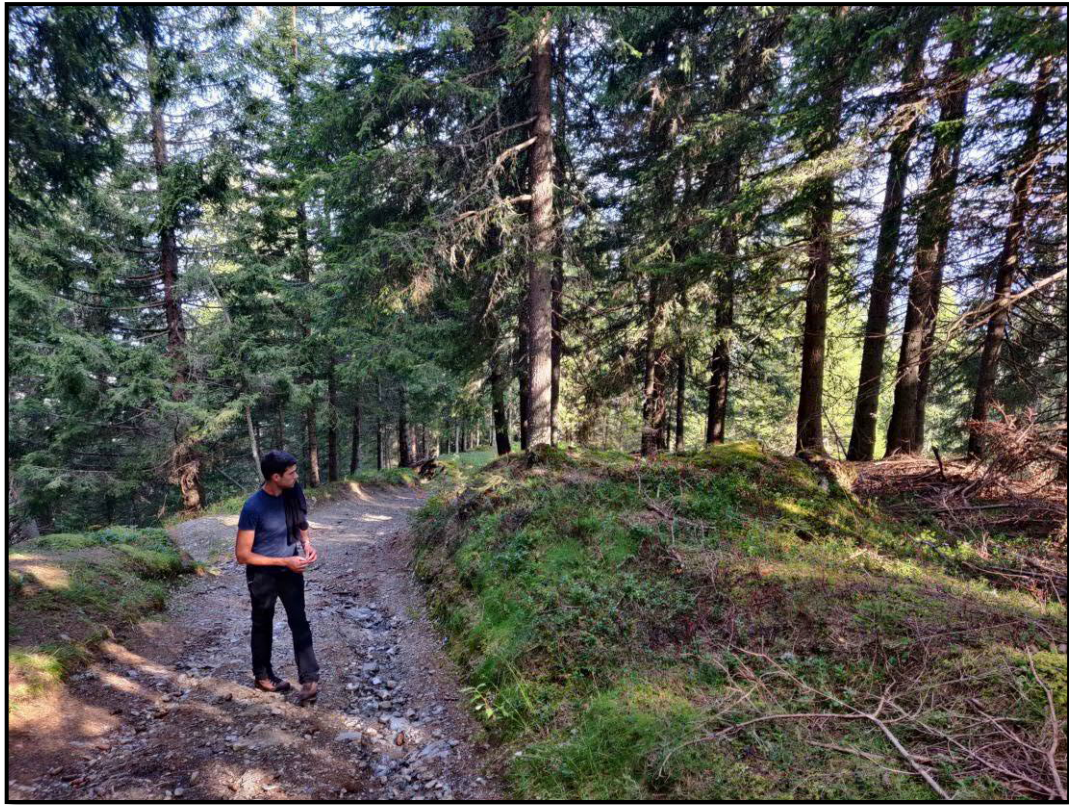


Foto 11



Foto 12



Foto 13



Foto 14



Foto 15



Foto 16



Foto 17



Foto 18



Foto 19



Foto 20



Foto 21



Foto 22



Foto 23



Foto 24



Foto 25



Foto 26



Foto 27

ZUFAHRSSSTRASSE



Foto 28



Foto 29



Foto 30



Foto 31



Foto 32

SKIWEG WEIDEN



Foto 33



Foto 34

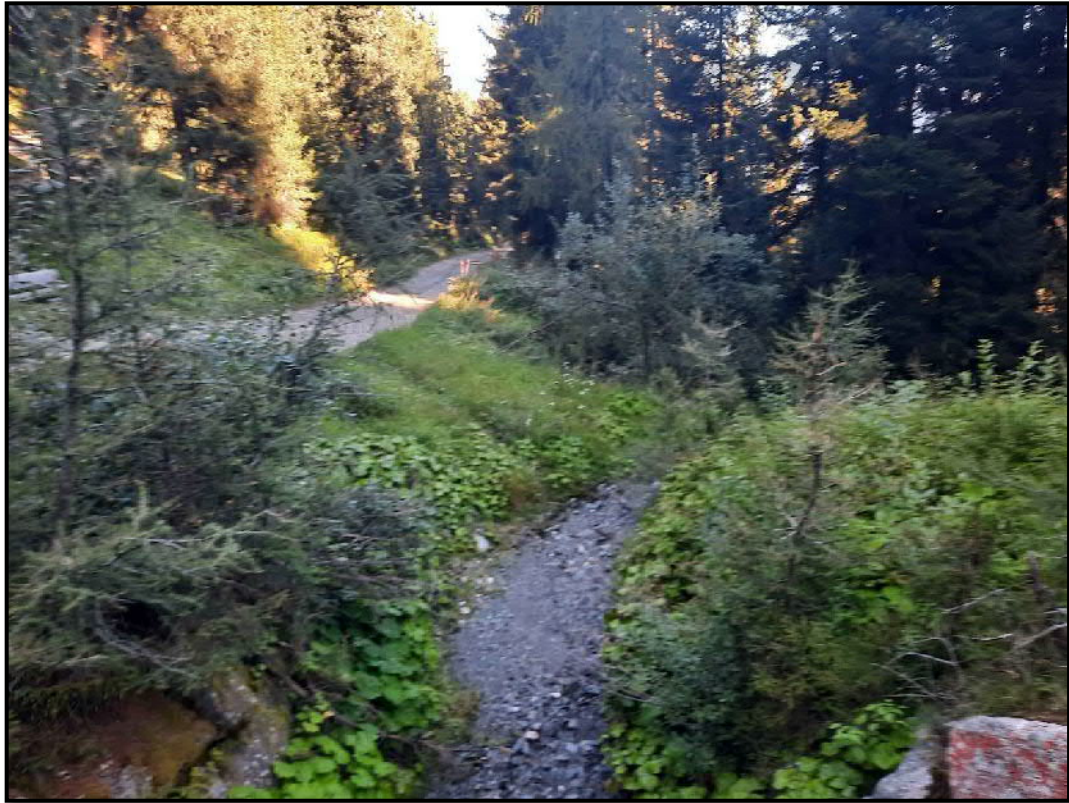


Foto 35



Foto 36



Foto 37

SYLVESTER



Foto 38

SKIWEG HERZLALM



Foto 39



Foto 40



Foto 41



Foto 42



Foto 43



Foto 44

SKIPISTE TRASSE

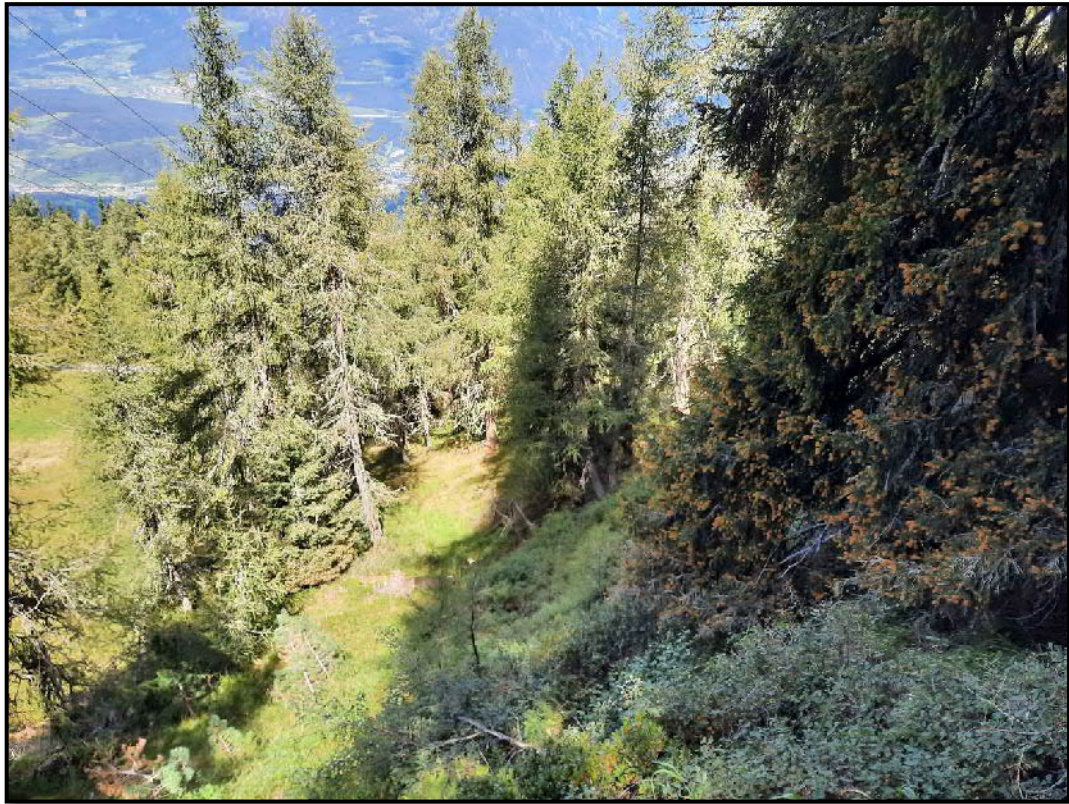


Foto 45



Foto 46



Foto 47

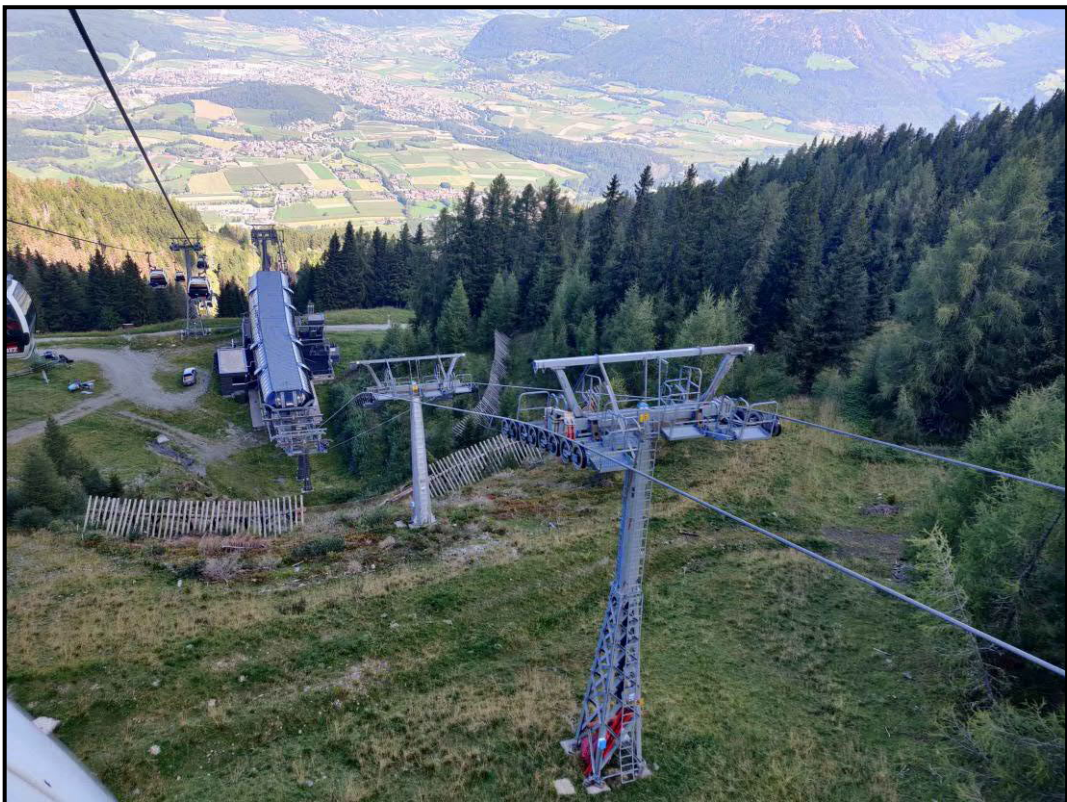


Foto 48